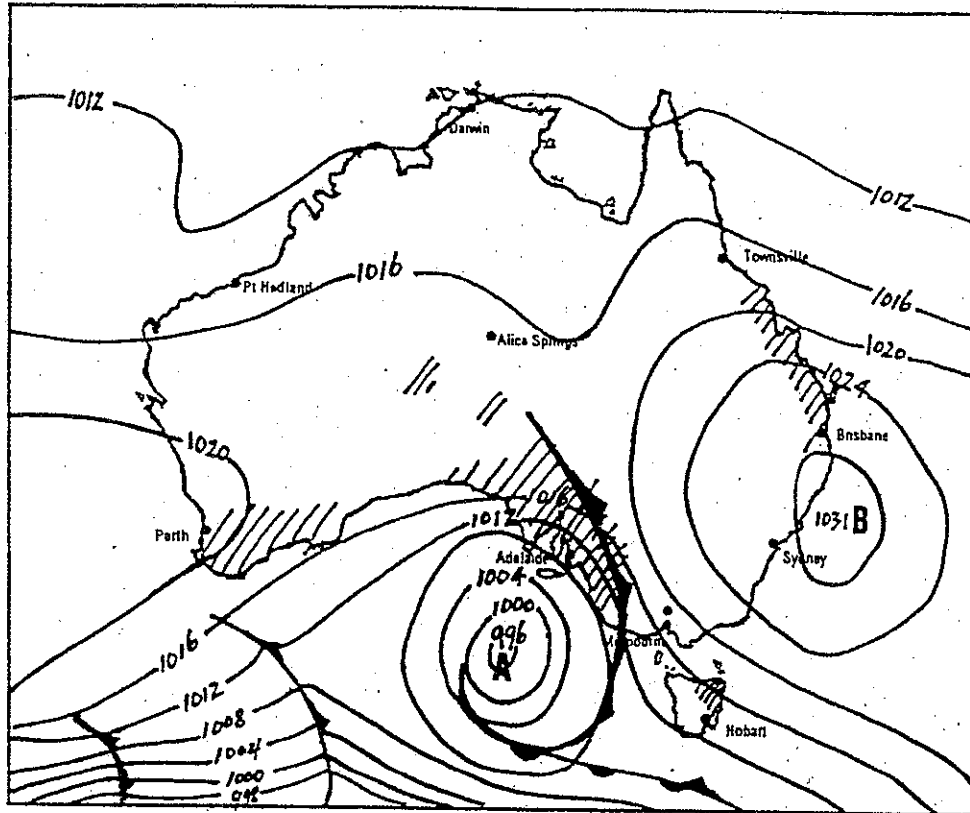


**Topic Test 5 Atmospheric variations - Synoptic charts**  
 (Suggested time 30 minutes)

Use the information from the synoptic chart to answer the questions below it.

Map 1

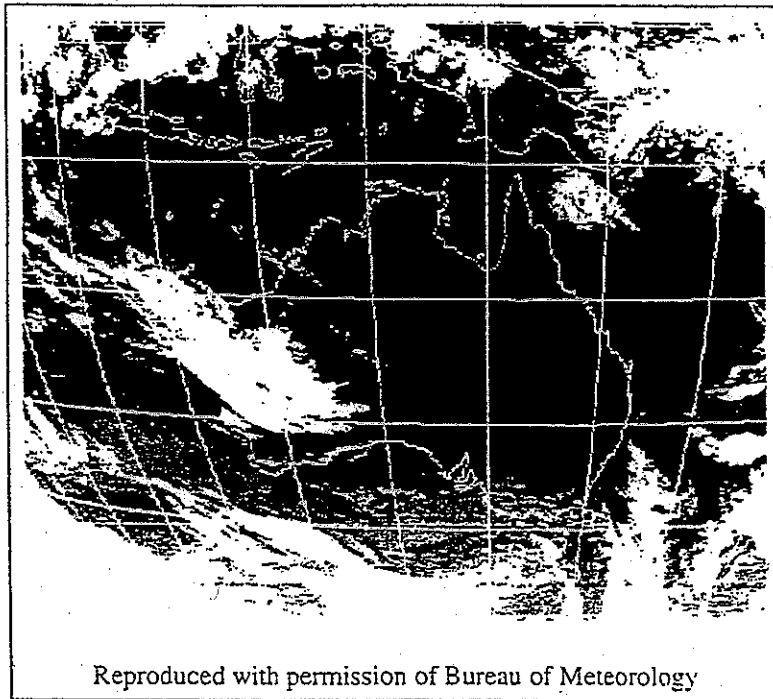
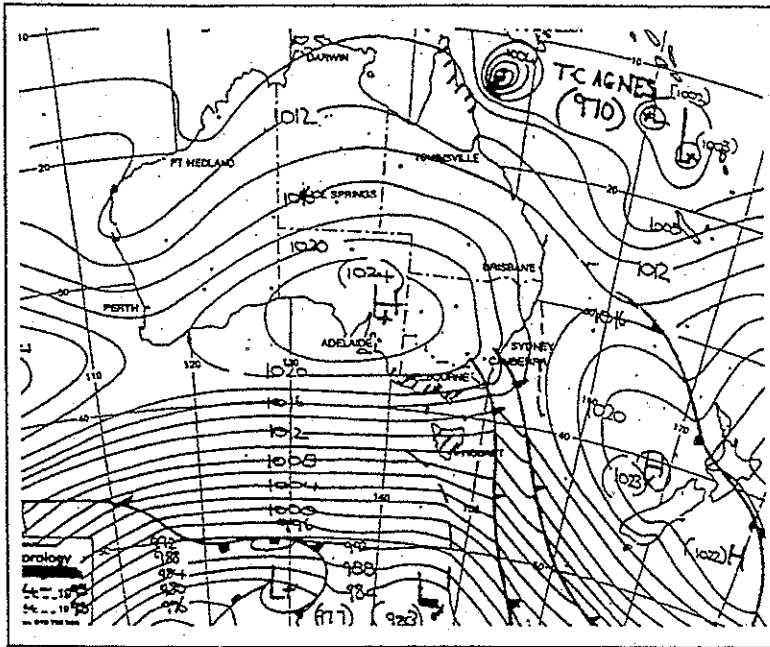


1. What type of pressure cell would be at A on the map? (1 mark)  
\_\_\_\_\_
2. What type of pressure cell would be at B on the map? (1 mark)  
\_\_\_\_\_
3. What would be the wind direction and approximate speed at:- (2 marks)  
 Melbourne \_\_\_\_\_  
 Perth \_\_\_\_\_
4. According to the chart, name **FOUR** capital cities that have experienced rain:- (1 mark)  
\_\_\_\_\_
5. If you were forecasting the weather for Melbourne for the next 12 hours what would you predict about each of the following:-
  - (a) Temperature \_\_\_\_\_
  - (b) Barometric Pressure \_\_\_\_\_
  - (c) Wind direction \_\_\_\_\_
  - (d) Wind Speed \_\_\_\_\_
  - (e) Cloud cover \_\_\_\_\_
  - (f) Precipitation \_\_\_\_\_

(4 marks)

Map 2

Refer to the Synoptic chart and satellite image on this page to answer the following questions:-



Reproduced with permission of Bureau of Meteorology

6. What is the highest pressure shown on the map? (1 mark)

---

7. What is the lowest pressure shown on the map? (1 mark)

---

8. Name the feature to the northeast of Australia. (1 mark)

---

9. Name the feature to the east of Tasmania. (1 mark)

---

10. Name the feature passing over New Zealand? (1 mark)

---

11. What type of rainfall would be experienced in Melbourne? (1 mark)

---

12. What type of rainfall would be experienced on the east coast of Cape York Peninsula? (1 mark)

---

13. What is the wind direction over Tasmania? (1 mark)

---

14. What is the wind direction from Alice Springs to Perth? (1 mark)

---

15. What air masses are moving towards Melbourne, Perth and Townsville? (3 marks)

Melbourne \_\_\_\_\_

Perth \_\_\_\_\_

Townsville \_\_\_\_\_

16. Give a reason for the presence of the cloud over the north west of Australia. What might happen to this cloud band over the next 24 hours?

\_\_\_\_\_ (2 marks)

17. Write a brief weather forecast for Adelaide for the next 24 hours.

\_\_\_\_\_ (2 marks)

Total 25 marks