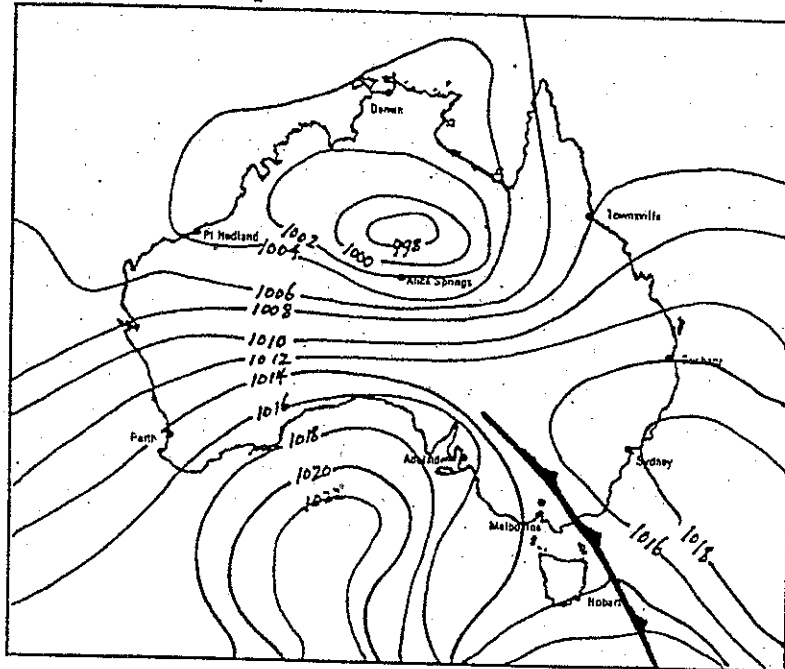


**Topic Test 3 Atmospheric variations - weather maps**

(Time 30 minutes)

The following questions refer to Map 1

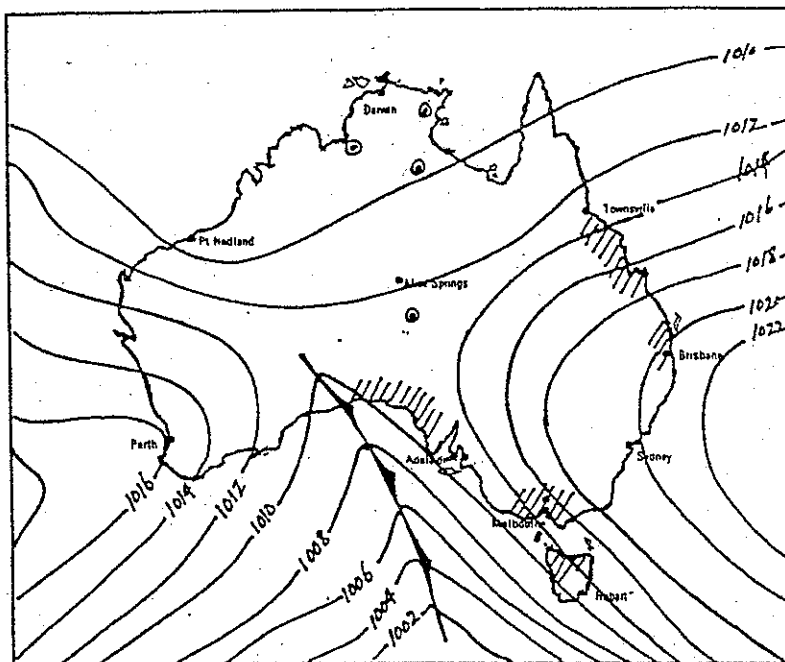
MAP 1



1. Mark on the map the High and Low pressure cells. (2 marks)
2. Mark on the map the circulation of the winds (2 marks)
3. What is the wind direction at
  - Adelaide \_\_\_\_\_
  - Armidale \_\_\_\_\_
  - Alice Springs \_\_\_\_\_
  - Perth \_\_\_\_\_
  - Rockhampton \_\_\_\_\_(5 marks)
4. Which season of the year is the weather map? (1 mark)  
 Give a reason? \_\_\_\_\_  
 \_\_\_\_\_ (1 mark)
5. Which air masses are influencing:
  - Adelaide \_\_\_\_\_
  - Darwin \_\_\_\_\_
  - Alice Springs \_\_\_\_\_
  - Perth \_\_\_\_\_
  - Hobart \_\_\_\_\_(5 marks)
6. Write a brief weather forecast for Perth mentioning temperature, wind direction, cloud cover and possibility of rainfall.
  - \_\_\_\_\_
  - \_\_\_\_\_
  - \_\_\_\_\_(2 marks)

The following questions refer to Map 2

Map 2



7. Mark on the map the pressure cells and wind circulation. (2 marks)
8. What five changes will occur as the cold front passes over Adelaide. (2 marks)

---



---



---



---



---

(2 marks)

9. What is the wind direction at
- Melbourne \_\_\_\_\_
  - Darwin \_\_\_\_\_
  - Sydney \_\_\_\_\_
  - Perth \_\_\_\_\_
  - Hobart \_\_\_\_\_

(5 marks)

10. Which capital has the strongest wind and why?

---



---

(1 mark)

- 11 Which air mass is influencing Adelaide

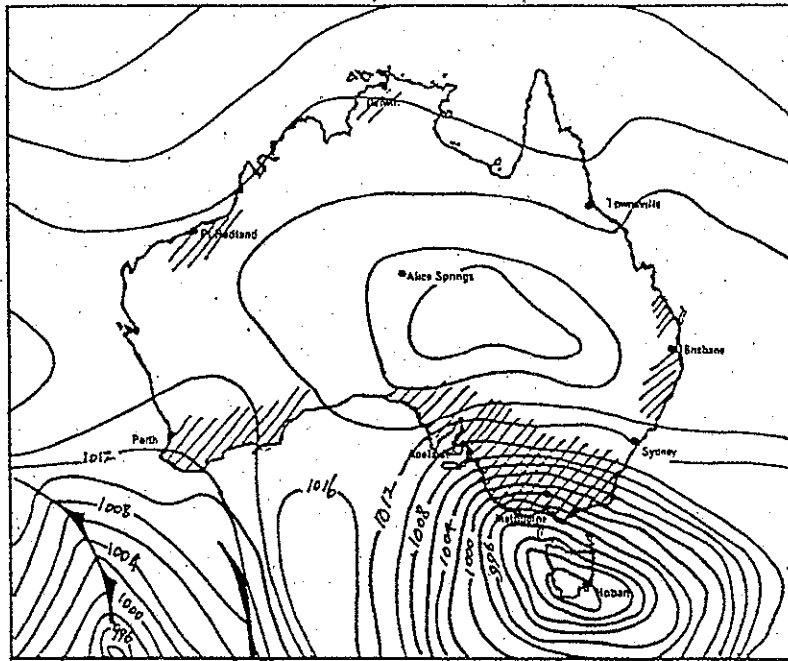
Perth \_\_\_\_\_

---

(2 marks)

The following questions refer to Map 3

Map 3



12. Mark on the map the High and Low pressure cells. (2 marks)

13. Mark on the map the circulation of the winds (1 mark)

14. What is the wind direction at

Adelaide

Brisbane

Alice Springs

Perth

Townsville

\_\_\_\_\_

\_\_\_\_\_

\_\_\_\_\_

\_\_\_\_\_

\_\_\_\_\_

(5 marks)

15. Which season of the year is the weather map? Give a reason?

\_\_\_\_\_

\_\_\_\_\_

(2 marks)

16. Which air masses are influencing:

Adelaide

Brisbane

Darwin

Perth

Townsville

\_\_\_\_\_

\_\_\_\_\_

\_\_\_\_\_

\_\_\_\_\_

\_\_\_\_\_

(5 marks)

17. Write a brief weather forecast for Perth.

\_\_\_\_\_

\_\_\_\_\_

\_\_\_\_\_

\_\_\_\_\_

(2 marks)

18. Give reasons for the rainfall over southern Australia during the past 24 hours.

---



---

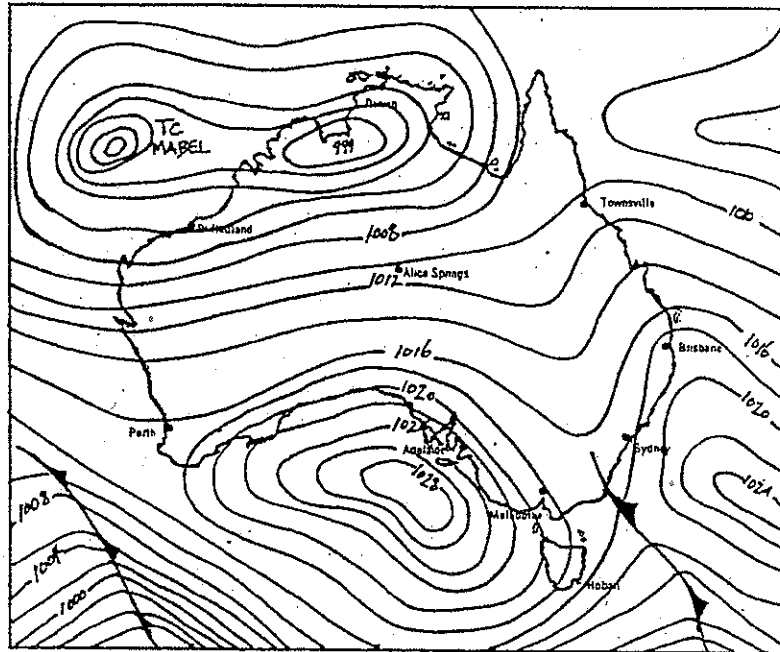


---

(1 mark)

The following questions refer to Map 4

Map 4



19. Mark on the map the pressure cells and wind circulation.

(2 marks)

20. What season is the weather map and why?

---



---

(2 marks)

21. What is the wind direction at

Melbourne

Sydney

Mount Gambier

Perth

Brisbane

---



---



---



---



---

(5 marks)

22. Which air mass is influencing

Adelaide

Brisbane

Darwin

Perth

Townsville

---



---



---



---



---

(5 marks)

23. Estimate the approximate temperature at Perth and Mount Gambier for the day shown.

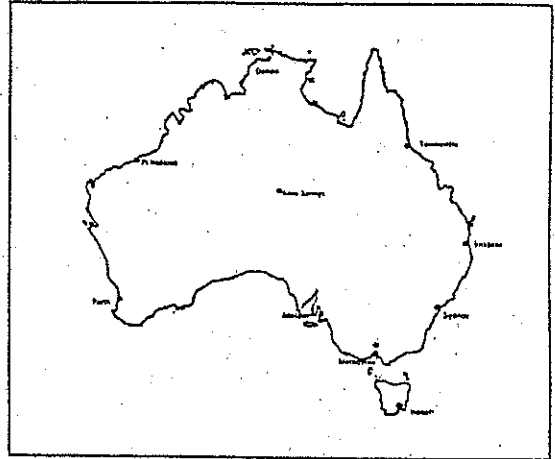
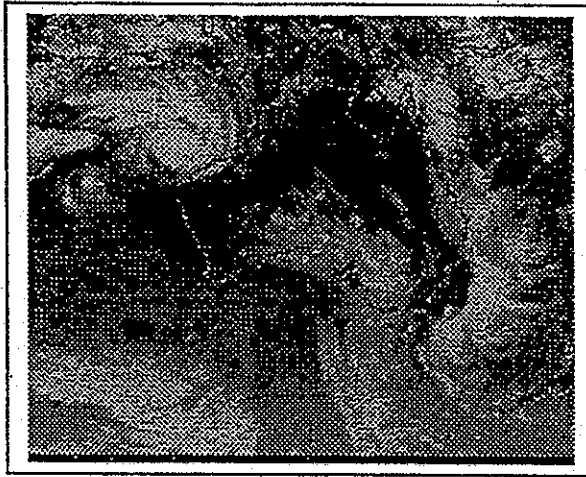
Adelaide \_\_\_\_\_

Perth \_\_\_\_\_

(2 marks)

24. Look at the satellite image below and place on the blank map the approximate position of the cold front over Australia and a tropical cyclone in the north

**Satellite image 1**



Write a weather forecast for Adelaide based on the satellite photograph shown.

\_\_\_\_\_

\_\_\_\_\_

\_\_\_\_\_

\_\_\_\_\_

\_\_\_\_\_

(2 marks)

Total 30 marks

**Student Notes**

\_\_\_\_\_

\_\_\_\_\_

\_\_\_\_\_

\_\_\_\_\_

\_\_\_\_\_

\_\_\_\_\_

\_\_\_\_\_

\_\_\_\_\_

\_\_\_\_\_

\_\_\_\_\_